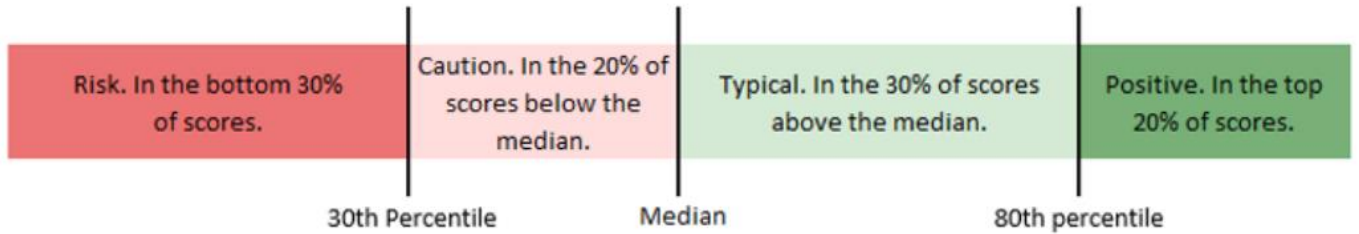


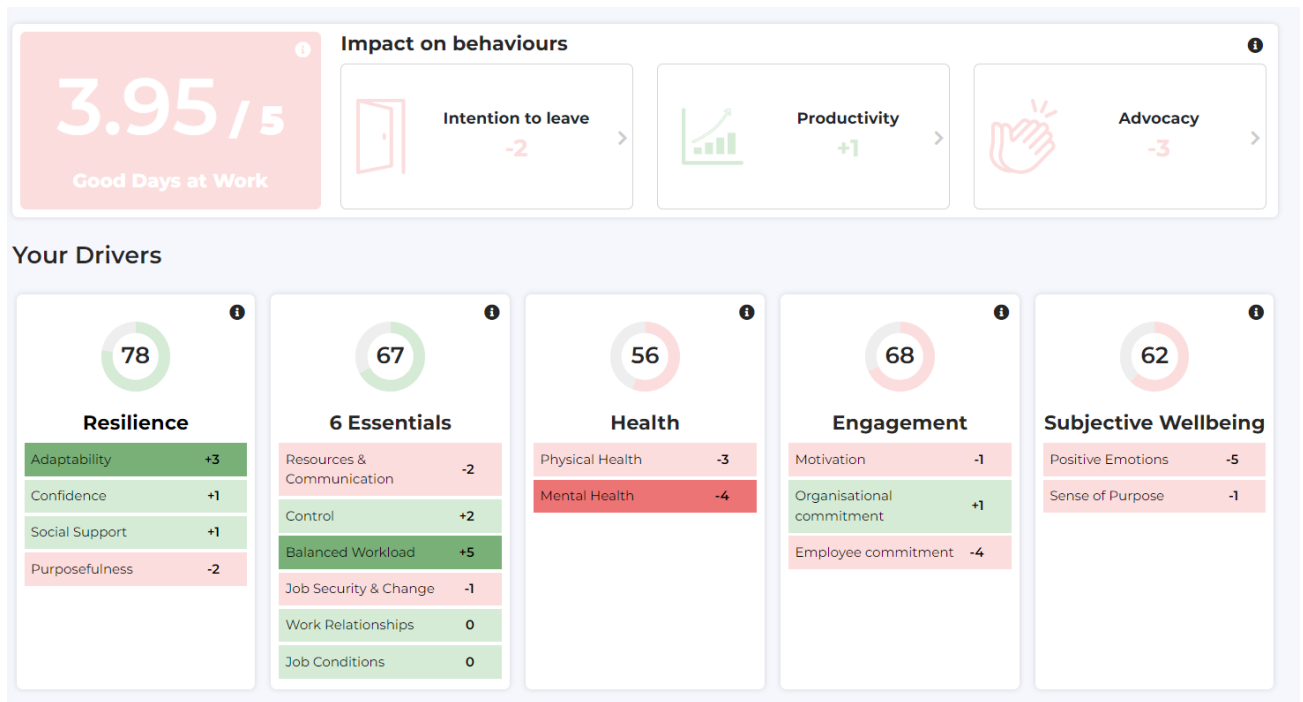
Appendix A - Visual comparisons between 2022 survey and 2023 survey

Below are screenshots of the dashboards from the 2022 and 2023 survey's, so you can visually compare the results. The key for the results is below:

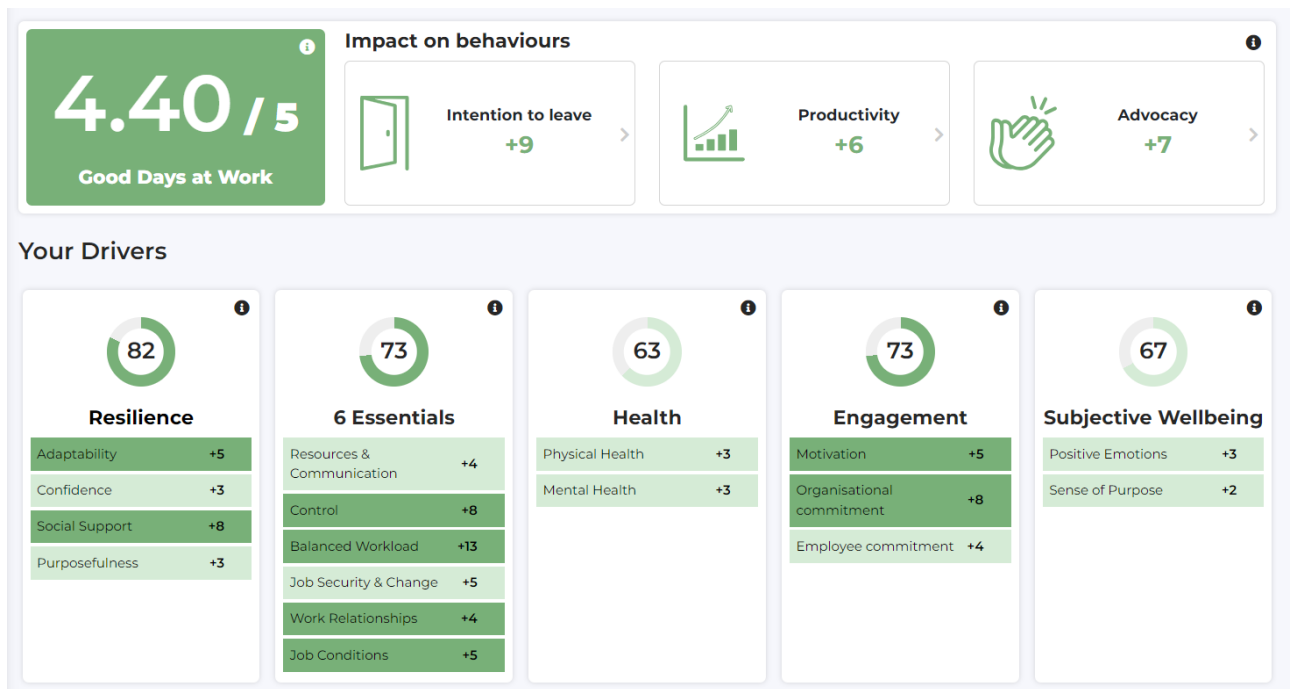


All staff dashboard

2022 – 310 respondents

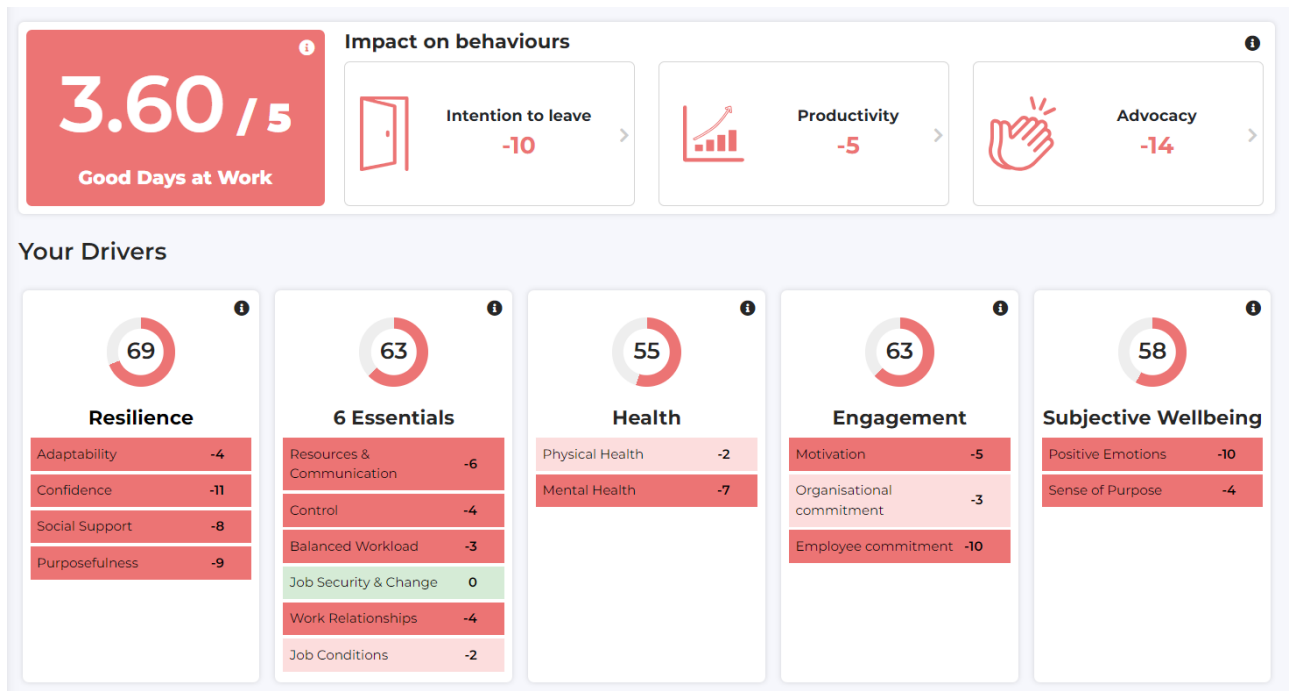


2023 – 331 respondents

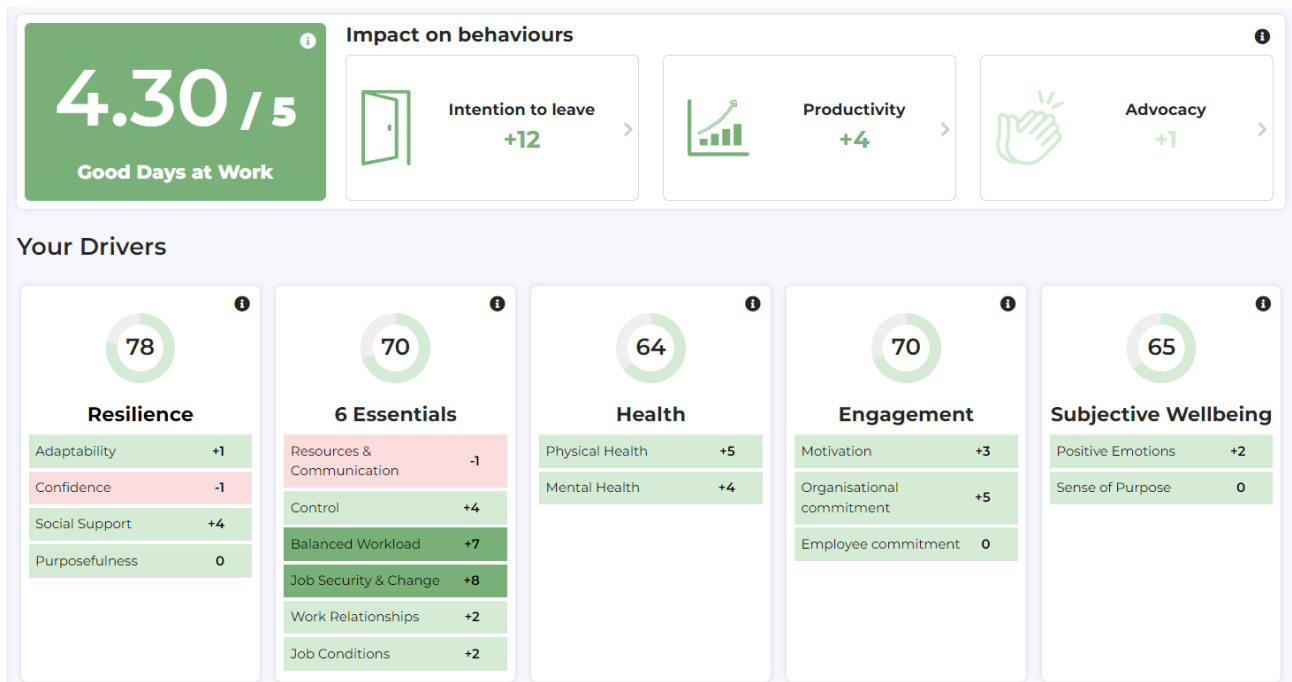


Greater Cambridgeshire Shared Planning Service

2022 – 58 respondents

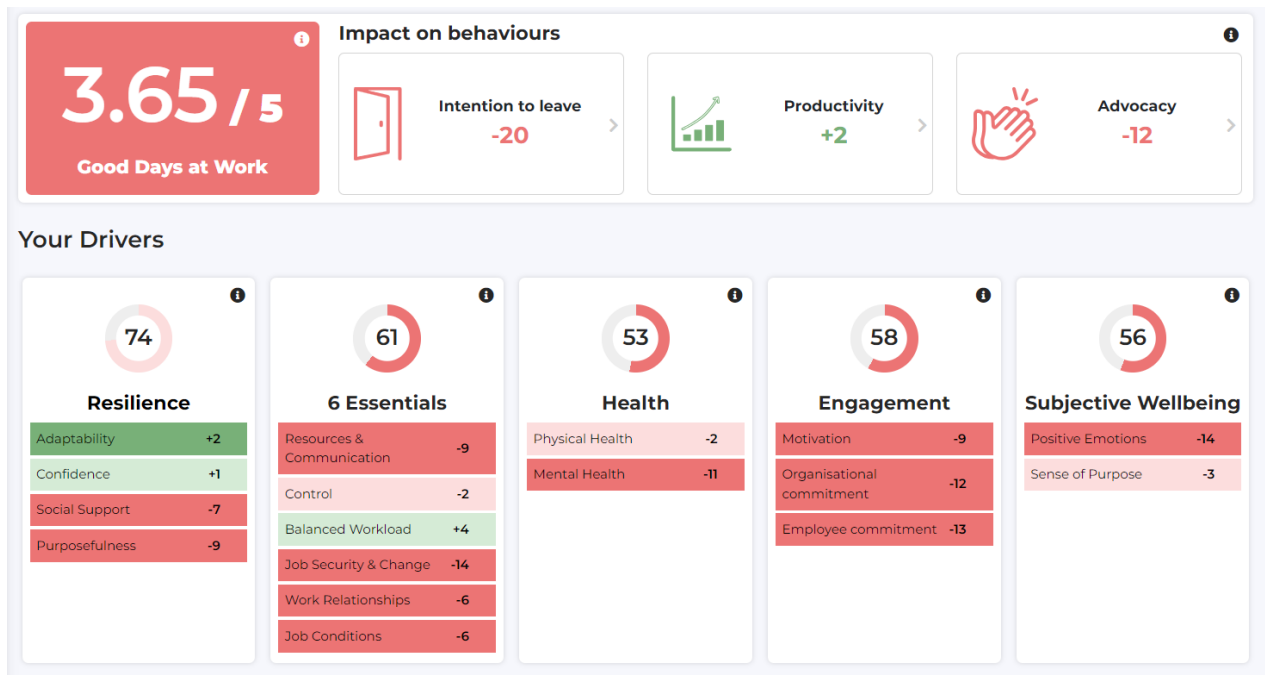


2023 – 91 respondents

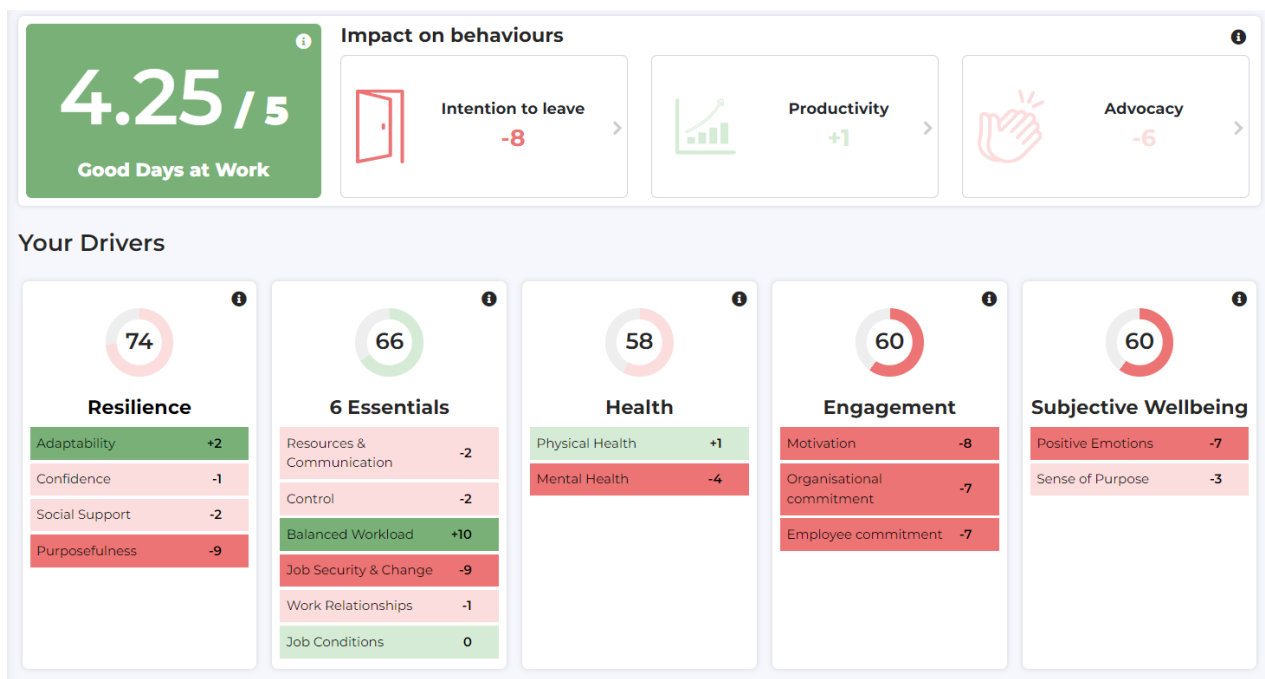


Finance Service

2022 – 34 respondents

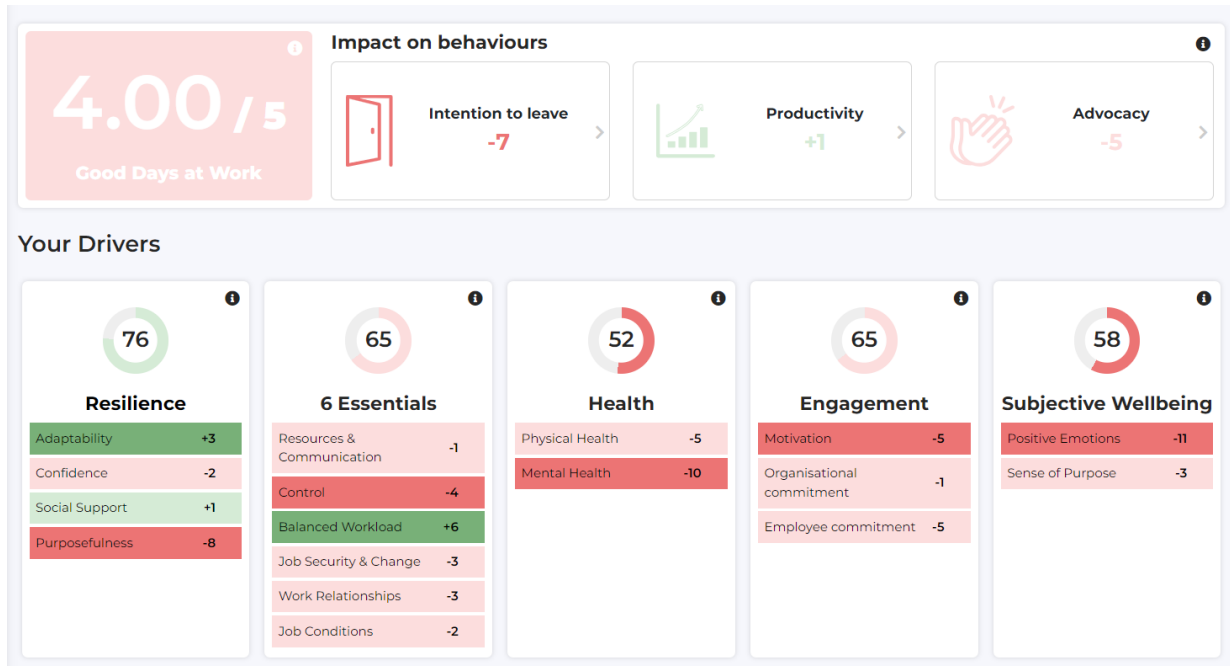


2023 – 44 respondents

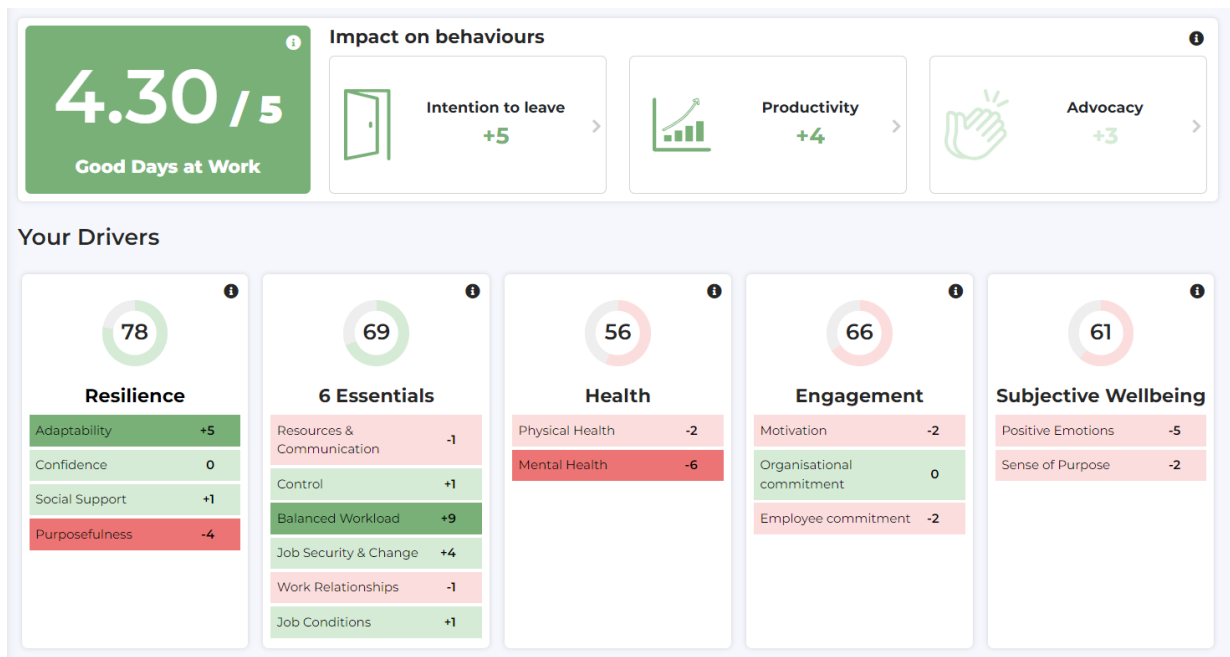


Part time staff

2022 – 49 respondents

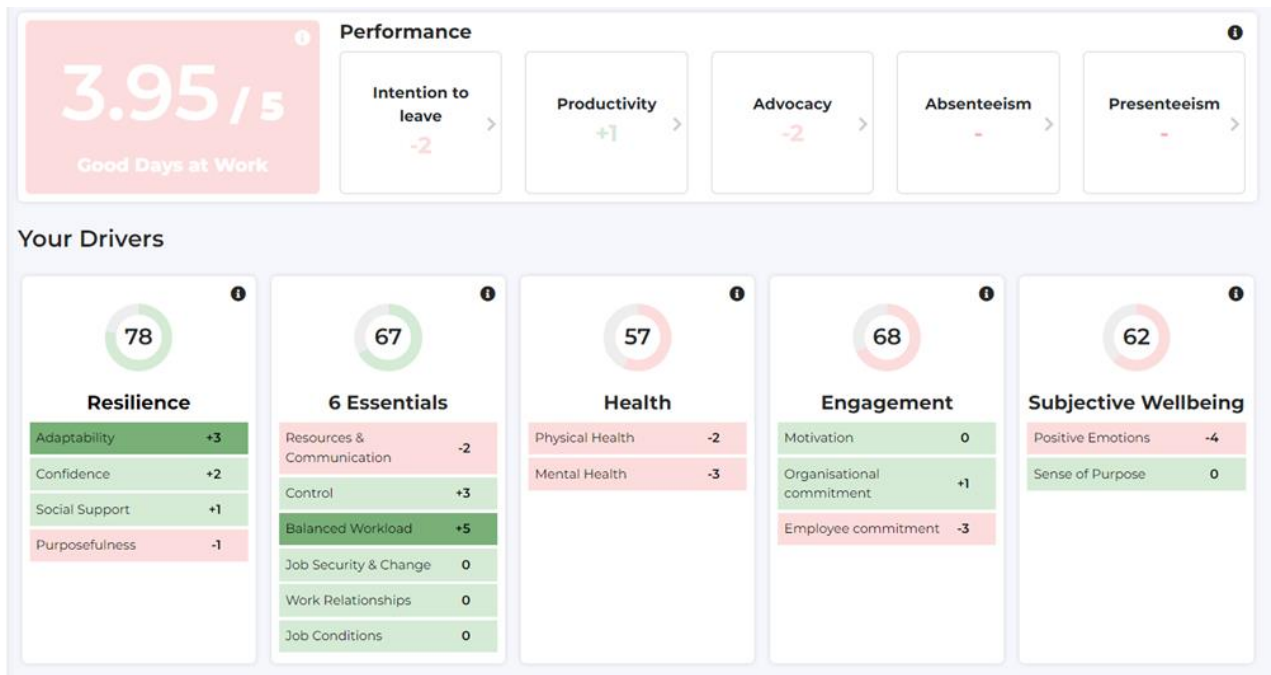


2023 – 56 respondents

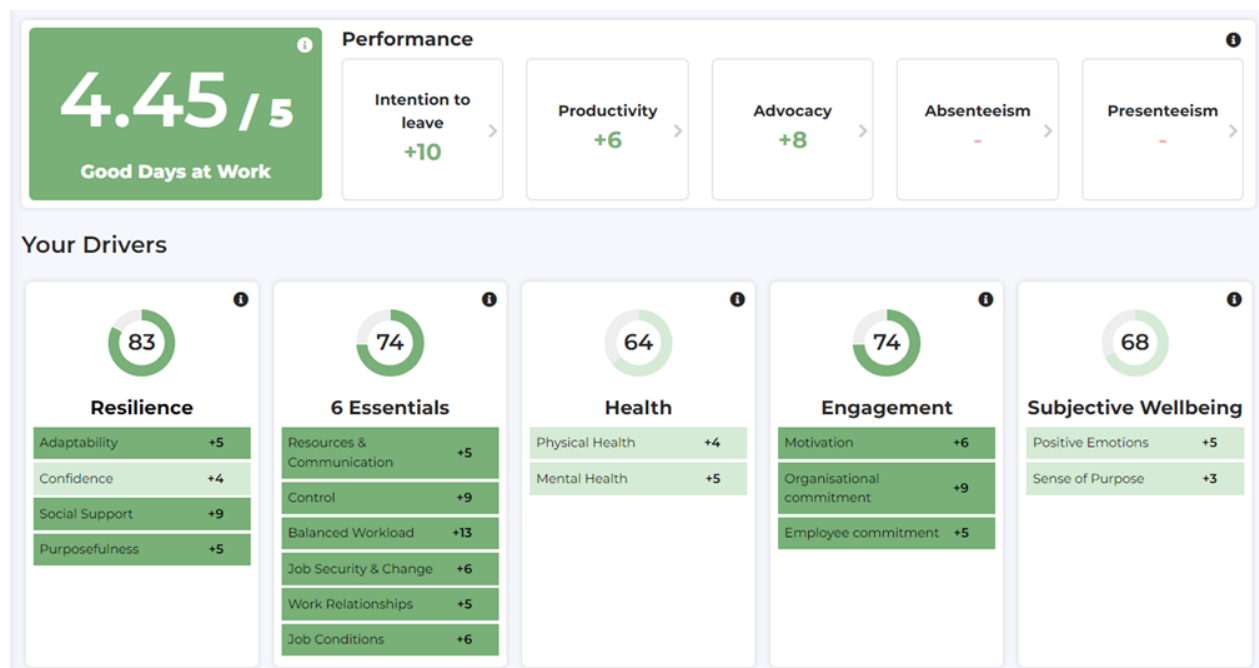


Full time staff

2022 – 261 respondents

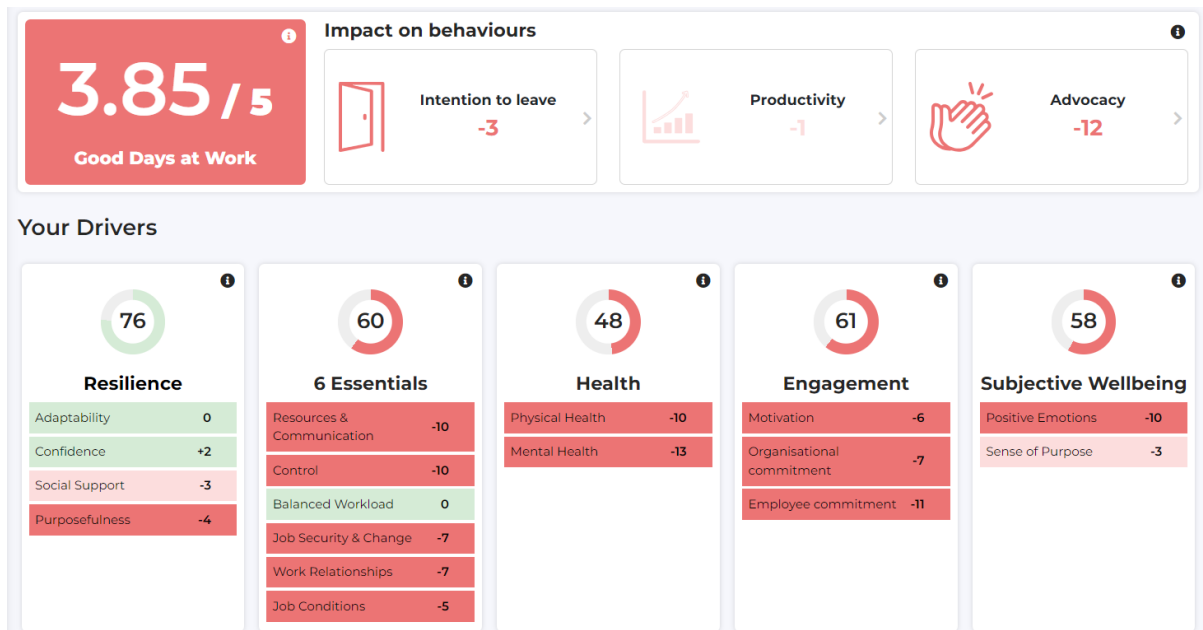


2023 – 275 respondents



Disabled staff

2022 – 37 respondents

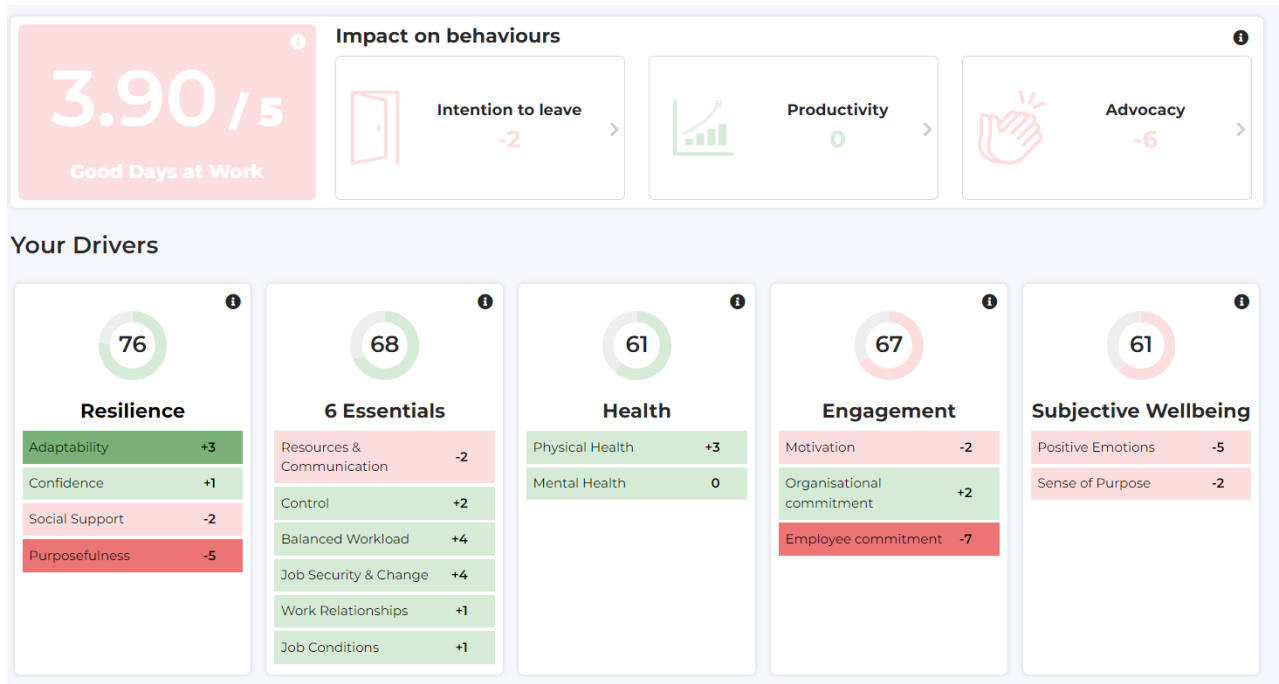


2023 – 30 respondents

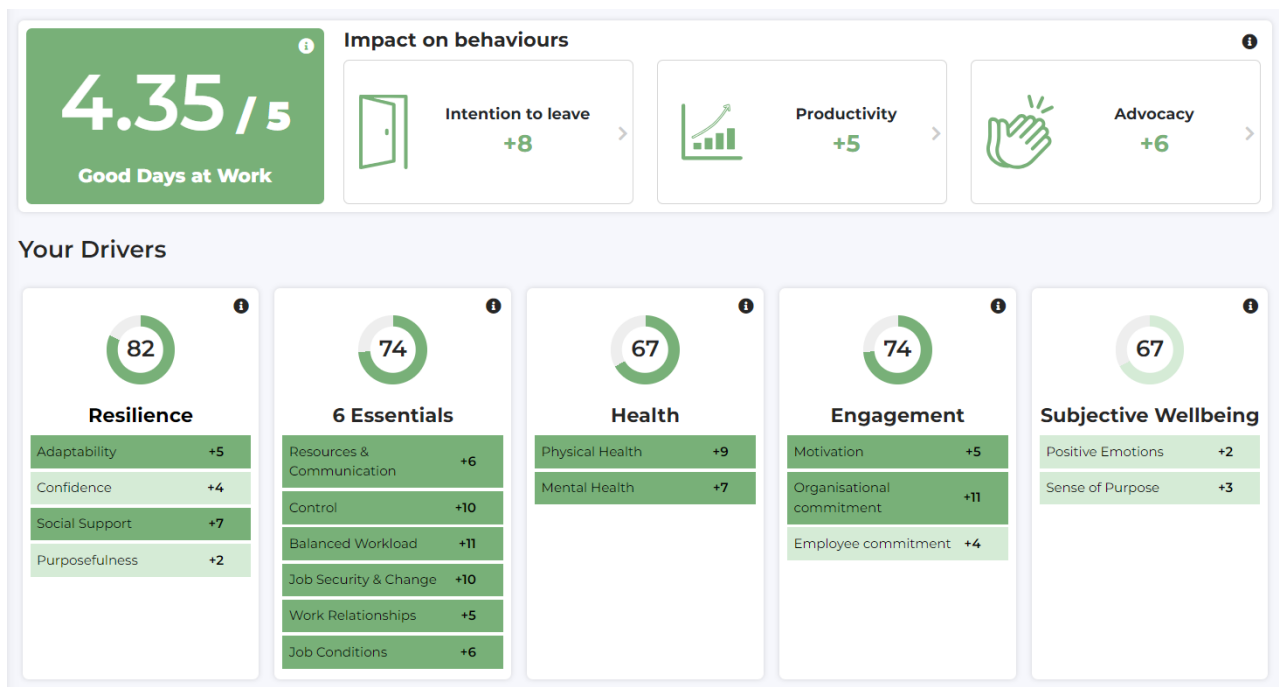


Male employees

2022 – 117 respondents

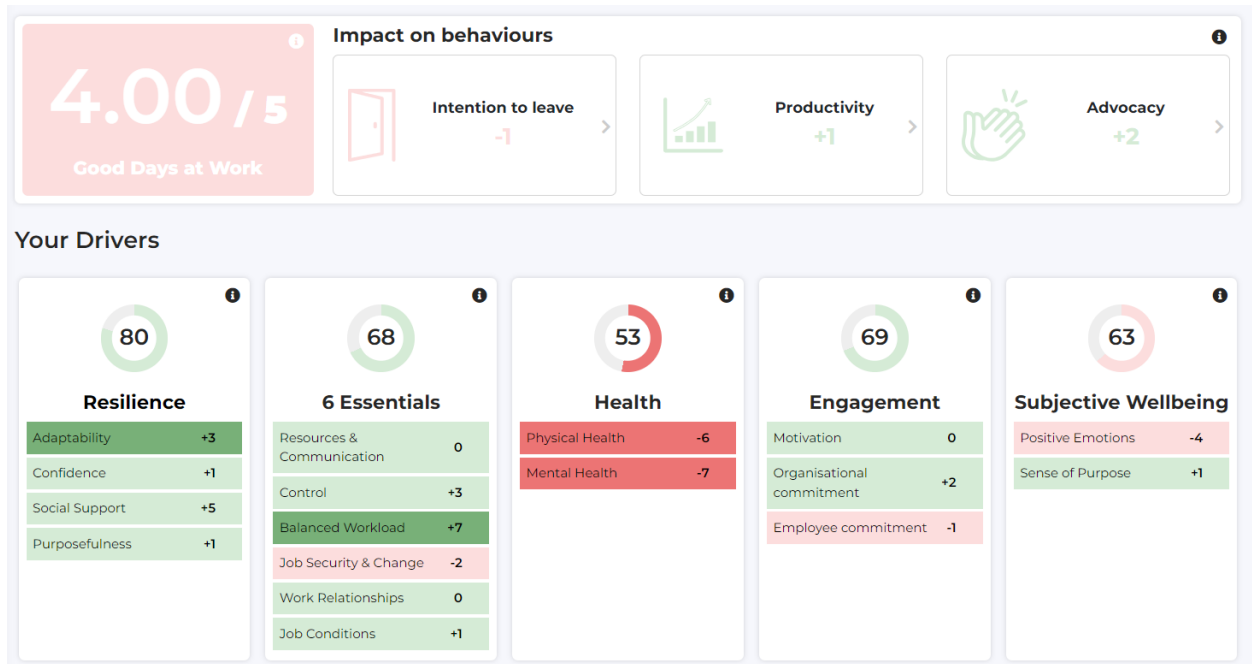


2023 – 100 respondents

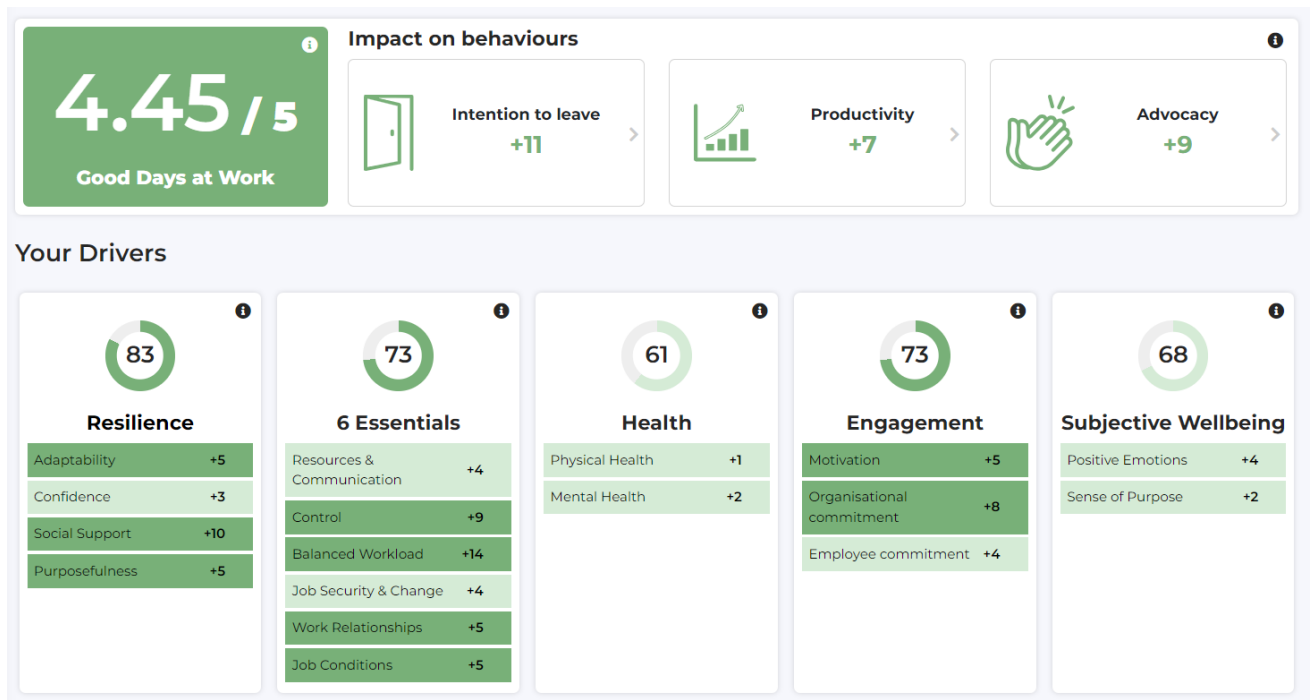


Female employees

2022 – 175 respondents

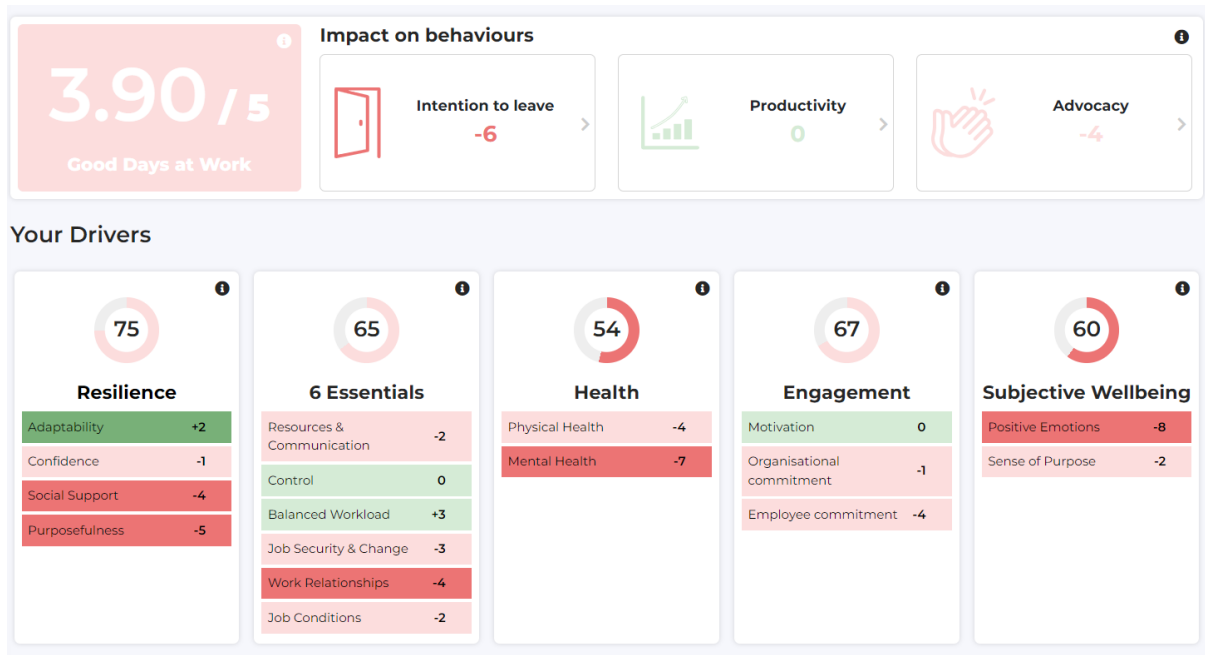


2023 – 221 respondents



Childcare responsibilities

2022 – 107 respondents

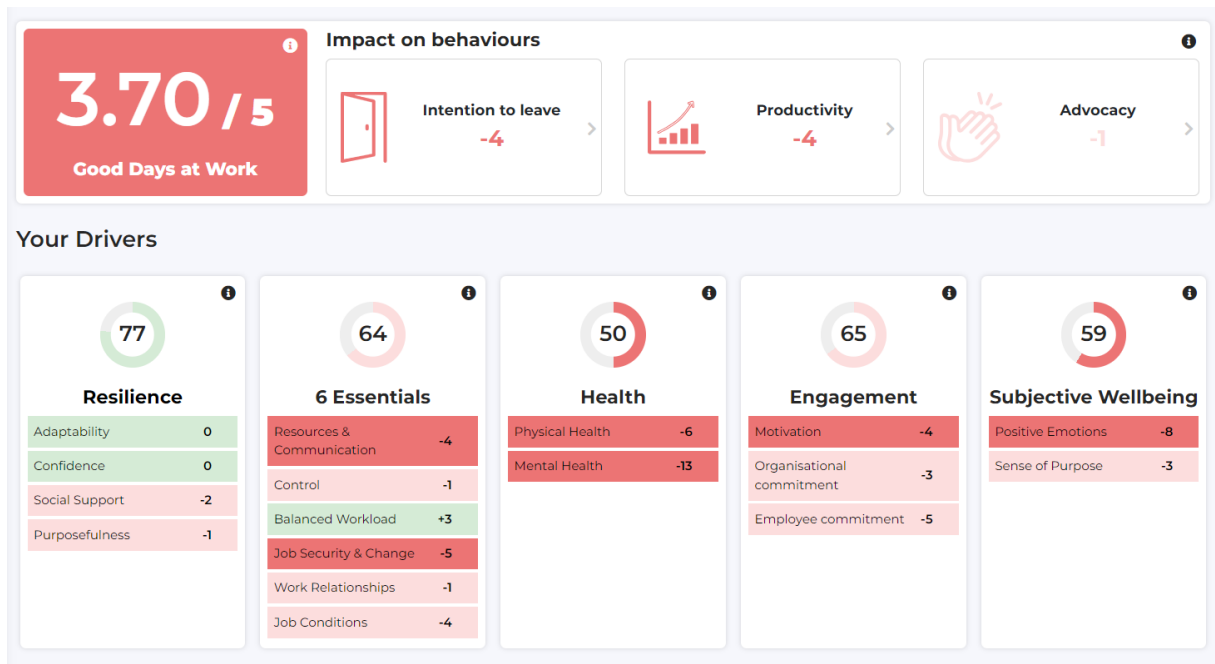


2023 – 112 respondents



Caregiving responsibilities

2022 – 45 respondents



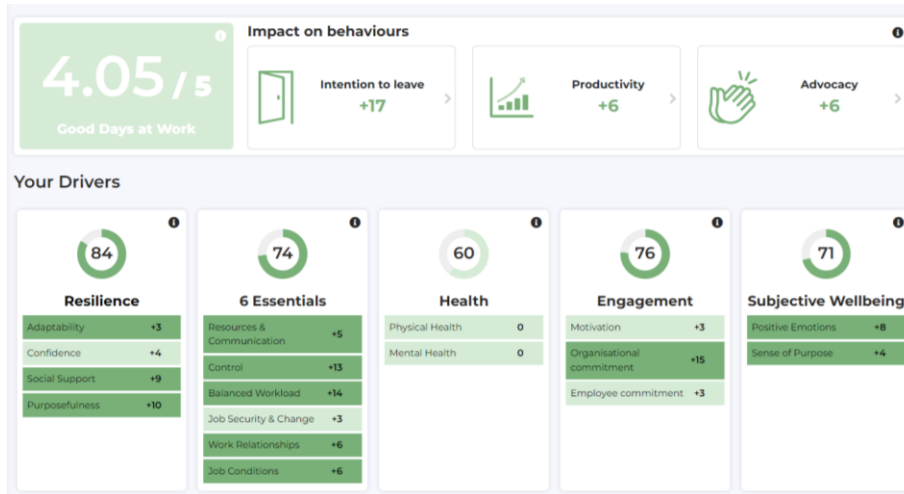
2023 – 47 respondents



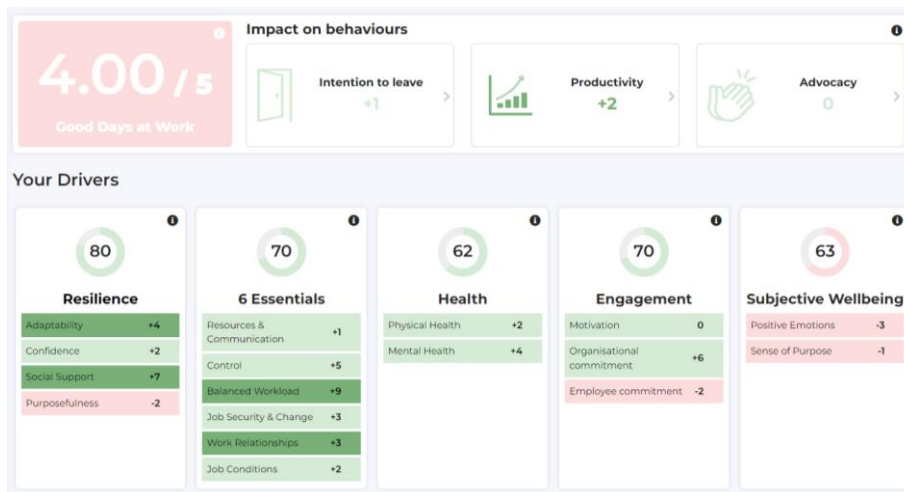
Length of service

2022

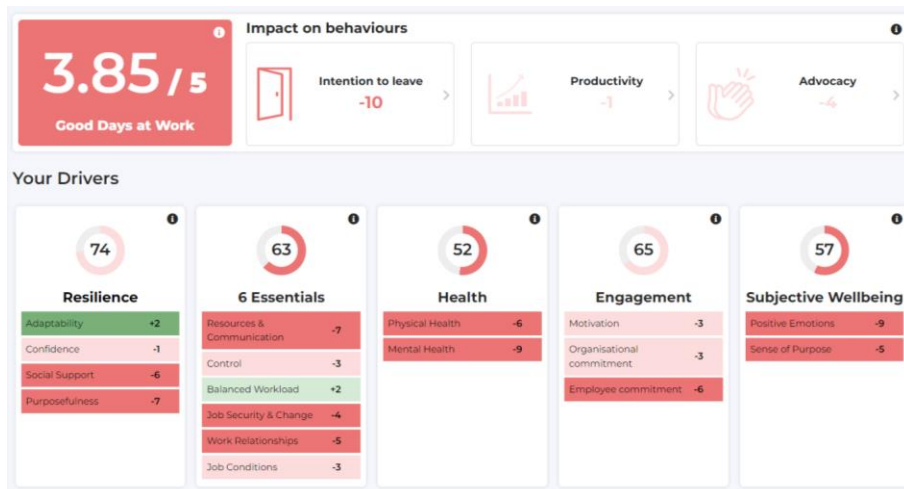
Less than 1 year – 31 respondents



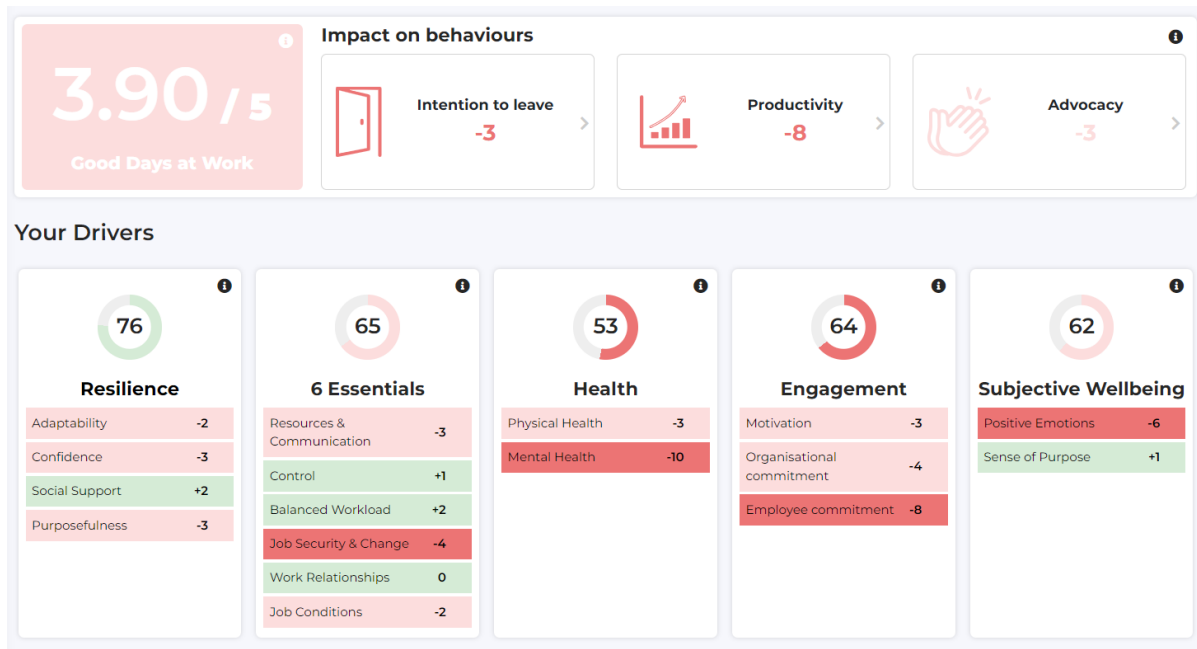
1-3 years – 77 respondents



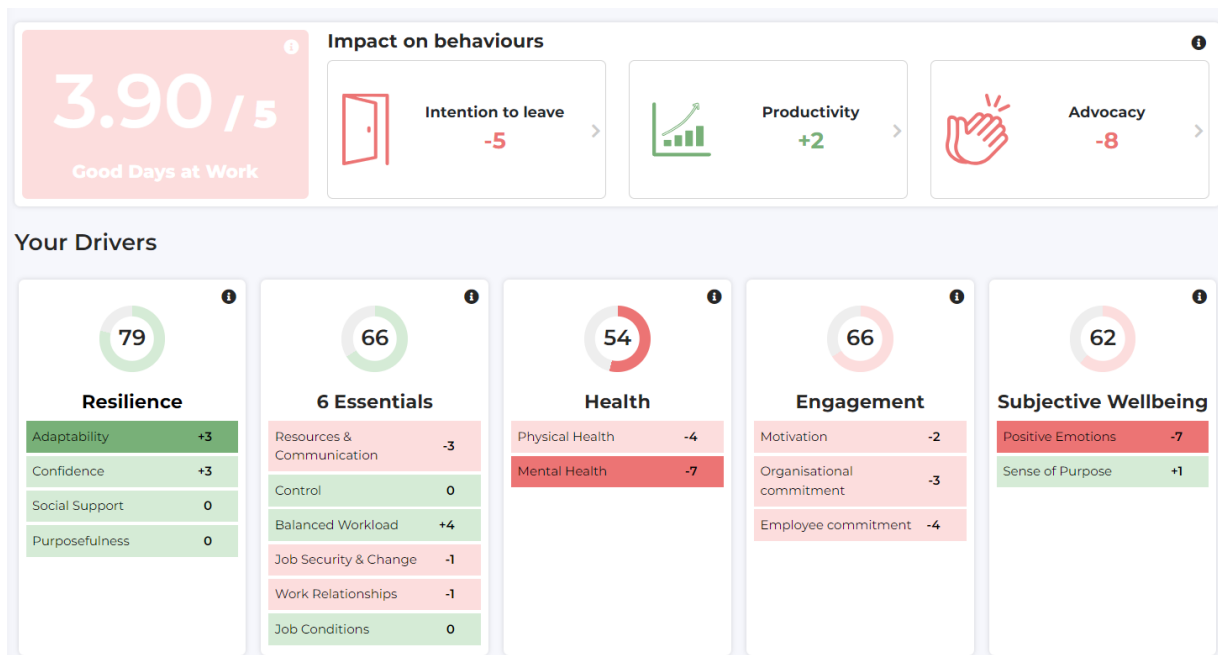
3-6 years – 88 respondents



6-10 years – 31 respondents



More than 10 years – 82 respondents



2023

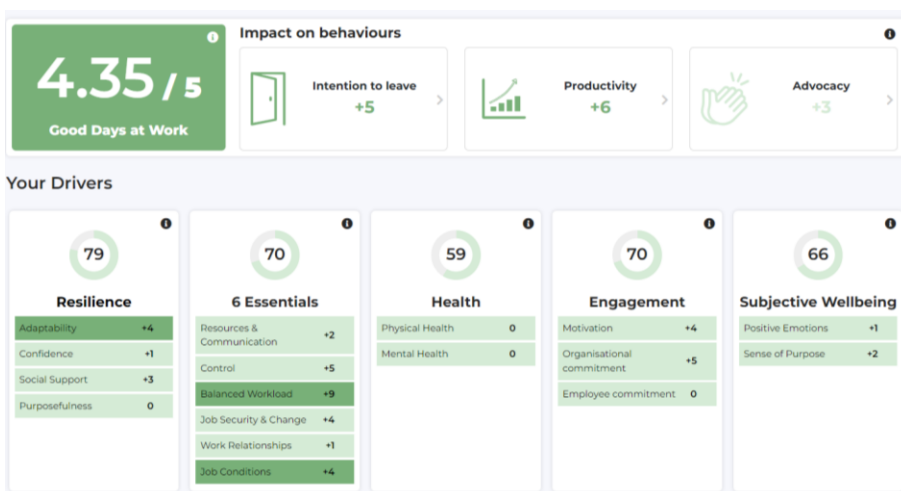
Less than 1 year – 44 respondents



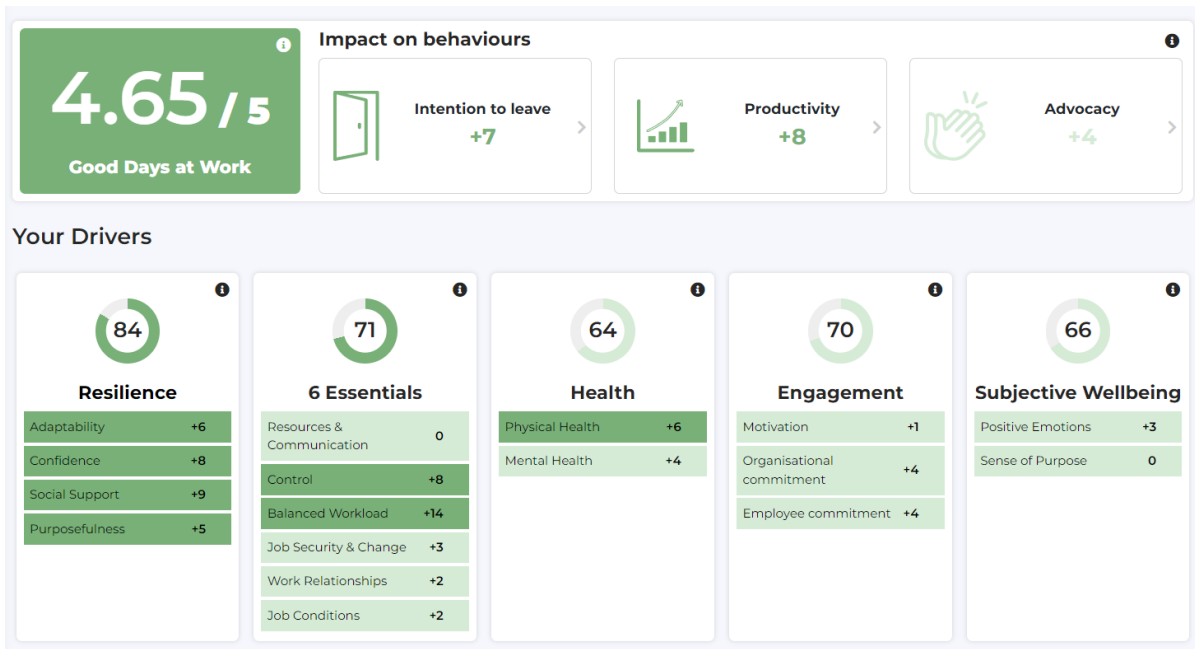
1-3 years – 74 respondents



3-6 years – 94 respondents



6-10 years – 37 respondents



More than 10 years

